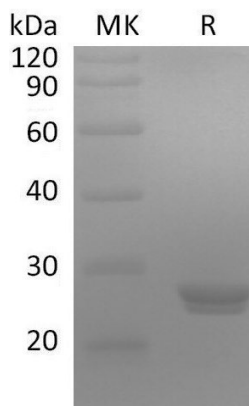


Specification

Product name:	Recombinant human CRP antigen
Source:	Produced by our Mammalian expression system
Accession #:	P02741
SDS-PAGE:	20-30 kDa, reducing conditions
Construction:	Recombinant Human sCRP
Predicted Molecular Mass:	23.9kDa
Activity:	Immunoreactivity was confirmed by reacting with monoclonal antibodies specific to human CRP .
Application:	ELISA, immunology, others unspecified.
Form:	Liquid
Formulation:	20 mM Tris, 300 mM NaCl, 5mM CaCl ₂ , pH 8.0
Stability & Storage:	Stable at -80°C
Shipping condition:	The product is shipped on ice pack.Upon receiving, store it immediately at the recommended temperature.
Conc. Determined:	BCA
Purity:	>90%

SDS-PAGE



Greater than 90% as determined by reducing SDS-PAGE. (QC verified).

BACKGROUND

C-reactive protein (CRP) belongs to the pentaxin family. CRP is a secreted protein found in plasma. It can binds two calcium ions per subunit. CRP can promotes phagocytosis, bacterial capsular swelling, complement fixation and agglutination through its calcium-dependent binding to phosphorylcholine which expressed on the surface of dead or dying cells. It can activate the complement system via the C1Q complex. CRP can interact with DNA and histones. In addition, CRP may scavenge nuclear material released from damaged circulating cells..

References:

1. Frontiers in Immunology (IF 5.9) Pub Date : 2023-09-18 , DOI: 10.3389/fimmu.2023.1264383.
2. The Prognostic Value of Preoperative C-Reactive Protein Levels in Resected Early-Stage Lung Cancer.
3. C-reactive protein and digestive pathologies: A narrative review for daily clinical use.
4. Prognostic Prediction in Patients with Interstitial Lung Disease Following Long-Term Oxygen Therapy Initiation Using C-Reactive Protein.
5. Development of a Point-of-Care System Based on White Light Reflectance Spectroscopy: Application in CRP Determination.